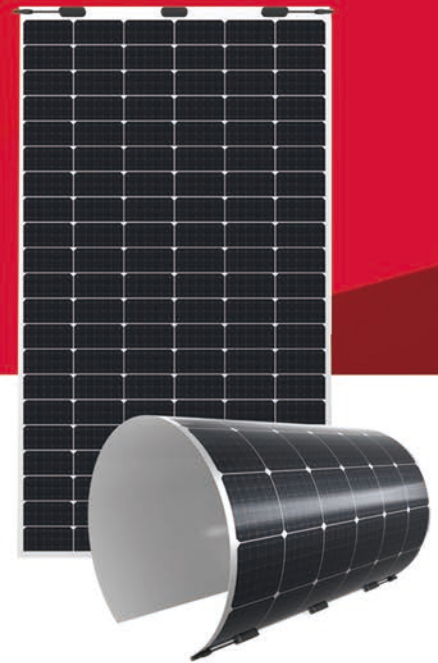


## FLEX SERIES

# 365-385W Hanergy Mono Flex Module



# 21.8%

Module efficiency up to 21.8%

## Features

### Light, Thin design

4.9kg weight, 1.7mm thickness, match various requirements for low-load projects

### Ultra Flexible

Ultra-thin silicon wafers with advanced organic polymer encapsulation materials, minimum bending radius reach 0.30m, fit all kinds of curved surface perfectly

### Convenient Installation

Easy installation and convenient transportation with lower cost

### Lead-free

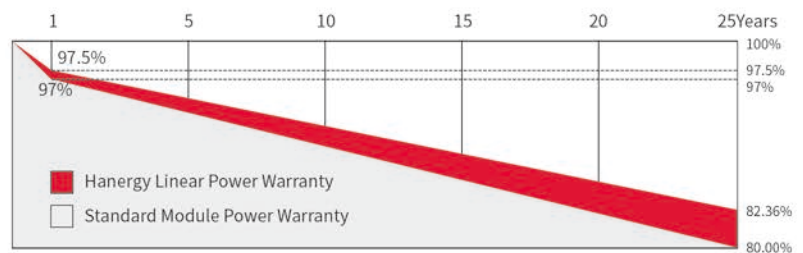
Eco-friendly PV design achieves lead-free MWT module without soldering materials

## Reinsurance Coverage for 25 Years



Insured by LLOYD'S

# LLOYD'S



※ 1st year degradation less than 2.5%, 25 years power output 82.36% guaranteed.

## Comprehensive Qualifications & Certifications

- ★ ISO 9001: 2015 Quality Management System
- ★ ISO 14001: 2015 Environment Management System

- ★ ISO 45001: 2018 Occupation Health Safety Management System



Beijing Hanergy HT Technology Co., Ltd.

Address: 3/f, No.13, Yanqi Street, Yanqi Economic Development Zone, Huairou District, Beijing

Email: HG@hanergy.com

Website: www.globalhanergy.com

## Electrical Characteristics at Standard Test Conditions(STC)

Spec/Model	Unit	HNG365QHES	HNG370QHES	HNG375QHES	HNG380QHES	HNG385QHES
Max-Power(Pm)	W	365	370	375	380	385
Power Tolerance	W			0~+5		
Max-Power Voltage(Vm)	V	34.9	35.1	35.3	35.5	35.7
Max-Power Current(Im)	A	10.46	10.54	10.62	10.70	10.78
Open-Circuit Voltage(Voc)	V	42.4	42.6	42.8	43.0	43.2
Short-Circuit Current(Isc)	A	11.09	11.16	11.23	11.30	11.35
Module Efficiency(ηm)	%	20.7	21.0	21.2	21.5	21.8

STC: AM=1.5, Irradiation 1000W/m<sup>2</sup>, Module Temperature 25°C

## Electrical Characteristics at Nominal Module Operating Temperature (NMOT)

Spec/Model	Unit	HNG365QHES	HNG370QHES	HNG375QHES	HNG380QHES	HNG385QHES
Max-Power(Pm)	W	274	278	282	286	290
Max-Power Voltage(Vm)	V	32.8	33.0	33.2	33.4	33.6
Max-Power Current(Im)	A	8.35	8.42	8.49	8.56	8.64
Open-Circuit Voltage(Voc)	V	39.9	40.1	40.3	40.5	40.7
Short-Circuit Current(Isc)	A	8.91	8.98	9.05	9.12	9.19

NMOT: Irradiation 800W/m<sup>2</sup>, Ambient temperature 20°C, Wind Speed 1m/s

## Temperature Coefficient

Nominal Module Operating Temperature	43±2°C
Temperature coefficient of Pmax	-0.36%/°C
Temperature coefficient of Voc	-0.28%/°C
Temperature coefficient of Isc	0.06%/°C

## Operating Conditions

Max. system voltage	DC1500V(IEC)
Max. series fuse rating	18A
Operating temperature range	-40°C~+85°C
Connector	MC4兼容

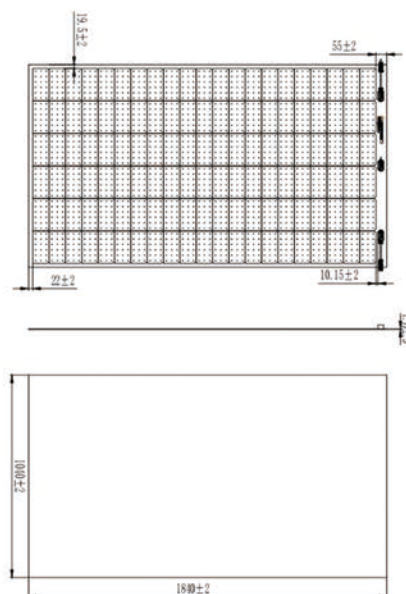
## Mechanical Characteristics

Installation Module Dimension (L×W×H)	1840mmx1040mmx1.7mm/2.5mm
Actual Module Dimension(L×W)	1763mmx1001mm
Weight	4.9kg/6.3kg
Back material	Back Sheet(white)
Cell (quantity / material / type / dimensions)	126(21x6) / Mono / Half-cell
Encapsulant	POE
Frame	None
Junction box(Protection degree)	IP68
Cable (length/cross-section area)	Customizable / 4mm <sup>2</sup>
Bending radius	0.3m

## Package

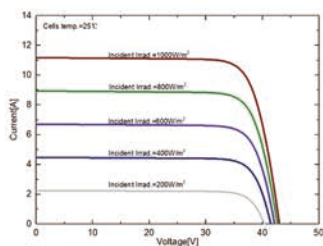
Container Size	Quantity(pcs)	Quantity(per pallet)
40' HQ	1104	46

## Module Size



## I-V Curve

I-V Curves of HNG375QHES at different irradiance



I-V Curves of HNG375QHES at different cell temperature

